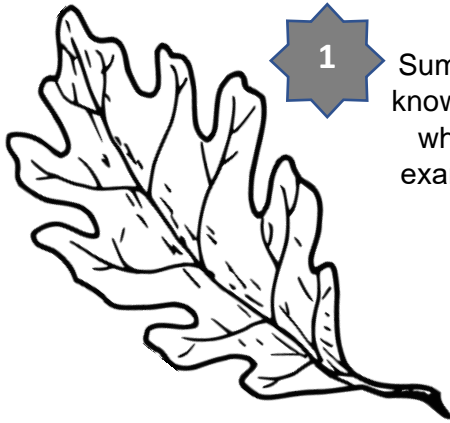


# WELCOME TO THE LOVELL QUINTA ARBORETUM

We hope you enjoy your visit with this free activity and colouring sheet



1

Summer is the time when all the trees are in full leaf. Did you know that every type of tree has different leaves? Can you tell which tree this leaf is from? Once you've guessed, find an example of the tree and check the label to see if you're right!

- A: oak
- B: holly
- C: elm

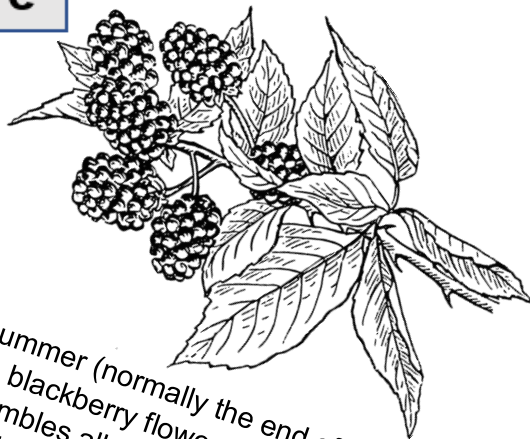
## BIGGEST



2

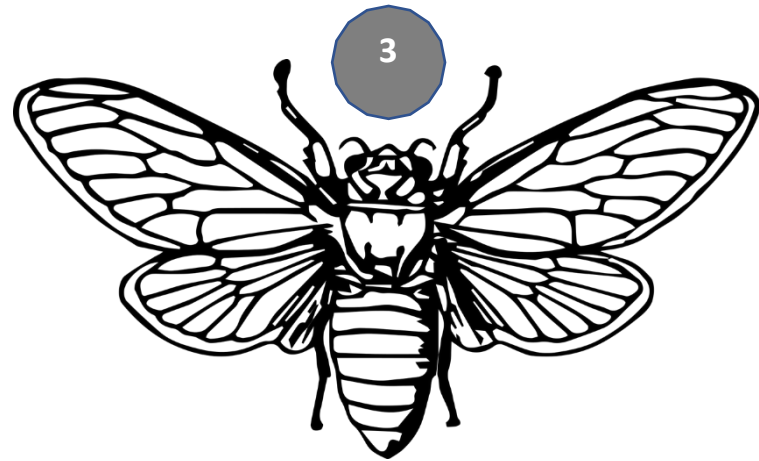
Did you know that some of our trees are champions? That means that they are the biggest (by height and girth) in the whole of Cheshire. They have special red labels to tell them apart from the other trees – how many can you find?

## in Cheshire



4

In late summer (normally the end of August/early September), blackberry flowers start to turn to fruit. You can find brambles all over the arboretum; long, green strands with little spikes on the stems. In the early summer you'll also see white flowers on the stems. Once the flowers have gone, the blackberry fruit starts to form. Can you find any?



3

Did you know that there are around 270 types of bee in Britain, but only one makes honey? It's called the honeybee, and you might see some in the arboretum – look carefully at the flowers.

You'll often see squirrels in the arboretum, jumping from branch to branch or climbing the trees. They are important to help spread trees, as they bury acorns in the ground and forget to dig them up so that the acorns grow into oaks! What other things might squirrels eat in the **wild**?

- A: cheese
- B. Horse chestnuts (conkers)
- C. Bread

5



The Lovell Quinta  
Arboretum

ANSWERS: Q1 A, Q5 B